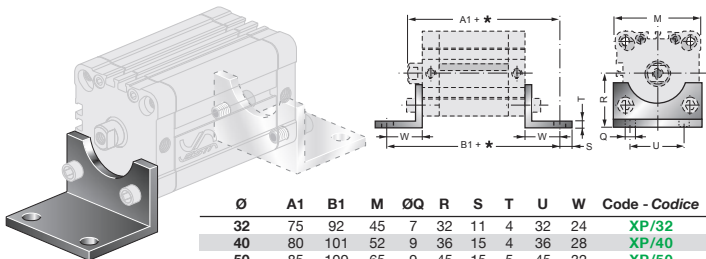


FIXING ACCESSORIES FOR ISO 21287 CYLINDERS / ACCESSORI DI FISSAGGIO PER CILINDRI ISO 21287

Note: the fixing screws are not included in the supply of the fittings / le viti di fissaggio non sono comprese nella fornitura degli accessori.

**XP/ ..** FOOT MOUNTING  
MONTAGGIO A PIEDINI

\* = Stroke / Corsa



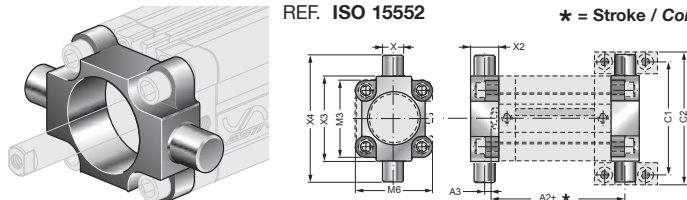
REF. ISO 15552

Ø	A1	B1	M	Q	R	S	T	U	W	Code - Codice
32	75	92	45	7	32	11	4	32	24	XP/32
40	80	101	52	9	36	15	4	36	28	XP/40
50	85	109	65	9	45	15	5	45	32	XP/50
63	89	113	75	9	50	15	5	50	32	XP/63
80	105	136	95	12	63	20	6	63	41	XP/80
100	118	149	115	14	71	25	6	75	41	XP/100

**XCBF/ ..** FLOATING FRONT HINGE MOUNTING  
MONTAGGIO CERNIERA OSCILLANTE ANTERIORE

REF. ISO 15552

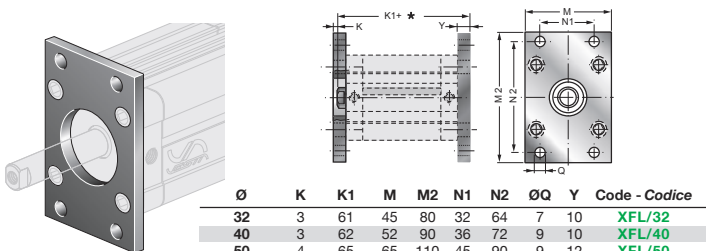
\* = Stroke / Corsa



Ø	A2	A3	C1	C2	M3	M6	ØX <sup>e9</sup>	X2	X3	X4	Code - Codice
32	58,5	0,5	71	86	45	45	12	15	50	74	XCBF/32
40	62	3	87	105	54	54	16	20	63	95	XCBF/40
50	63	2	99	117	64	64	16	20	75	107	XCBF/50
63	69,5	4,5	116	136	75	75	20	25	90	130	XCBF/63
80	76,5	2,5	136	156	93	93	20	25	110	150	XCBF/80
100	92	5	164	189	110	110	25	30	132	182	XCBF/100

**XFL/ ..** FLANGE MOUNTING  
MONTAGGIO A FLANGIA

\* = Stroke / Corsa



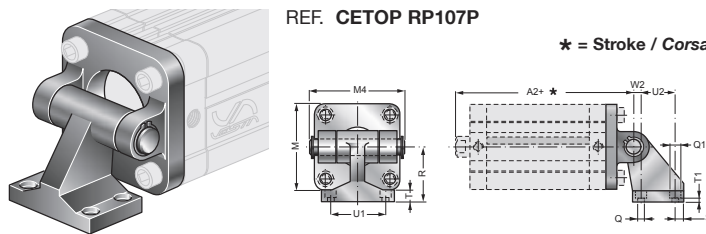
REF. ISO 15552

Ø	K	K1	M	M2	N1	N2	ØQ	Y	Code - Codice
32	3	61	45	80	32	64	7	10	XFL/32
40	3	62	52	90	36	72	9	10	XFL/40
50	4	65	65	110	45	90	9	12	XFL/50
63	4	69	75	120	50	100	9	12	XFL/63
80	6	80	95	150	63	126	12	16	XFL/80
100	6	93	115	170	75	150	14	16	XFL/100

**XAS/ ..** REAR HINGE HORIZONTAL MOUNTING  
MONTAGGIO A CONTROCERNIERA ORIZZONTALE

REF. CETOP RP107P

\* = Stroke / Corsa

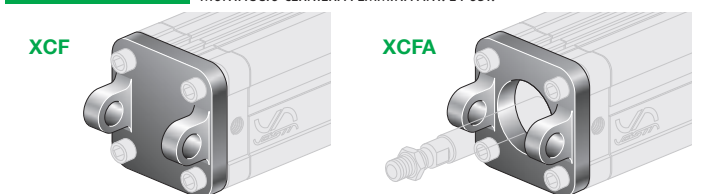


Ø	A2	M	M4	ØQ	ØQ1	R	S	T	T1	U1	U2	W2	Code - Codice
32	73	45	54	7	11	32	6,5	8	6,5	38	18	3	XAS/32
40	77	52	63	7	11	36	6,5	10	8,5	41	22	2	XAS/40
50	80	65	71	9	15	45	7,5	12	10,5	50	30	3	XAS/50
63	89	75	81	9	15	50	7,5	14	12,5	52	35	2	XAS/63
80	100	95	101	11	18	63	10	14	11,5	66	40	7	XAS/80
100	118	115	123	11	18	71	10	17	14,5	76	50	5	XAS/100

**XCF/ ..** FRONT AND REAR CLEVIS (FEMALE) MOUNTING  
MONTAGGIO CERNIERA FEMMINA ANT. E POST.

XCF

XCFA



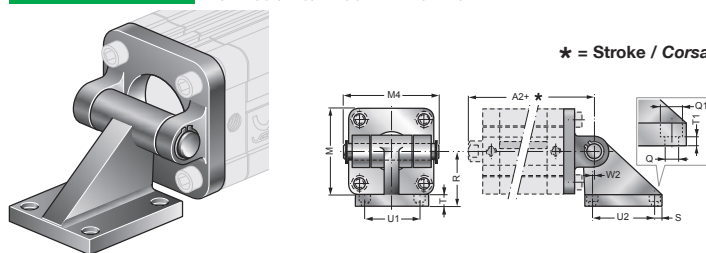
REF. ISO 15552

\* = Stroke / Corsa

Ø	A2	ØJ <sup>H9</sup>	K2	M	V1	V2	W	Z	Front code - Cod. ant.	Rear code - Cod. post.
32	73	10	15	45	26	45	22	11	XCFA/32	XCF/32
40	77	12	18	52	28	52	25	13	XCFA/40	XCF/40
50	80	12	19	65	32	60	27	13	XCFA/50	XCF/50
63	89	16	24	75	40	70	32	17	XCFA/63	XCF/63
80	100	16	26	95	50	90	36	17	XCFA/80	XCF/80
100	118	20	31	115	60	110	41	21	XCFA/100	XCF/100

**XASV/ ..** REAR HINGE HORIZONTAL MOUNTING  
MONTAGGIO A CONTROCERNIERA ORIZZONTALE

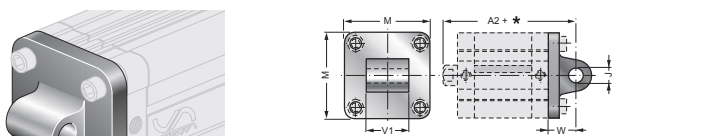
\* = Stroke / Corsa



Ø	A2	M	M4	ØQ	ØQ1	R	S	T	T1	U1	U2	W2	Code - Codice
32	73	45	54	7	11	32	8	10	5	32,5	32,5	0	XASV/32
40	77	52	63	7	11	36	8,5	10	5	38	38	0	XASV/40
50	80	65	71	9	15	45	10	12	5	46,5	46,5	0	XASV/50
63	89	75	81	9	15	50	10	12	5	56,5	56,5	0	XASV/63
80	100	95	101	11	18	63	12,5	14	6	72	72	0	XASV/80
100	118	115	123	11	18	73	13	16	6	89	89	0	XASV/100

**XCM/ ..** CLEVIS (MALE) MOUNTING  
MONTAGGIO A CONTROCERNIERA MASCHIO

\* = Stroke / Corsa

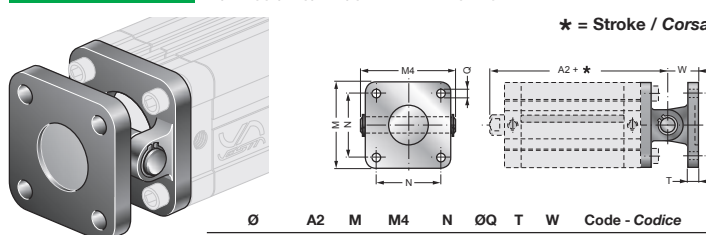


REF. ISO 15552

Ø	A2	ØJ <sup>H7</sup>	M	V1	W	Code - Codice
32	73	10	47	26	22	XCM/32
40	77	12	54	28	25	XCM/40
50	80	12	66	32	27	XCM/50
63	89	16	78	40	32	XCM/63
80	100	16	98	50	36	XCM/80
100	118	20	115	60	41	XCM/100

**XANL/ ..** REAR HINGE VERTICAL MOUNTING "L" SERIES  
MONTAGGIO A CONTROCERNIERA VERTICALE SERIE "L"

\* = Stroke / Corsa



Ø	A2	M	M4	N	ØQ	T	W	Code - Codice
32	73	45	54	32,5	7	10	22	XANL/32
40	77	52	63	38	7	10	25	XANL/40
50	80	65	71	46,5	9	12	27	XANL/50
63	89	75	81	56,5	9	12	32	XANL/63
80	100	95	101	72	11	16	36	XANL/80
100	118	115	123	89	11	16	41	XANL/100



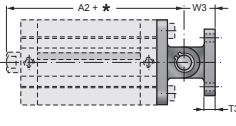
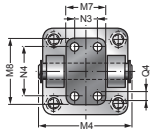
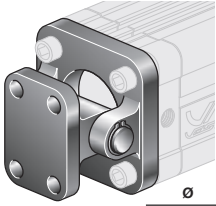
## FIXING ACCESSORIES FOR ISO 21287 CYLINDERS / ACCESSORI DI FISSAGGIO PER CILINDRI ISO 21287

Note: the fixing screws are not included in the supply of the fittings / le viti di fissaggio non sono comprese nella fornitura degli accessori.

### XANN/ ..

REAR HINGE VERTICAL MOUNTING "N" SERIES  
MONTAGGIO A CONTROCERNIERA VERTICALE SERIE "N"

\* = Stroke / Corsa

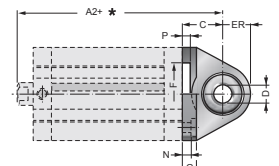
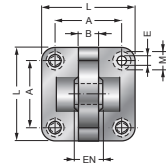
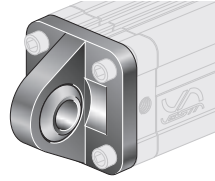


Ø	A2	M4	M7	M8	N3	N4	ØQ4	T3	W3	Code - Codice
32	73	54	25	40	-	28	7	8	18	XANN/32
40	77	63	28	52	16	38	9	10	26	XANN/40
50	80	71	32	52	16	38	9	10	26	XANN/50
63	89	81	40	75	25	54	11	12	34	XANN/63
80	100	101	50	75	25	54	11	12	34	XANN/80
100	118	123	60	115	32	90	14	16	41	XANN/100

### XCM-SN-AC/ ..

CLEVIS (MALE) WITH ROD EYE  
CERNIERA MASCHIO CON SNODO

\* = Stroke / Corsa



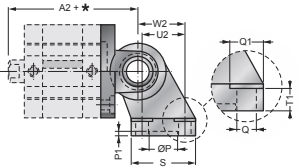
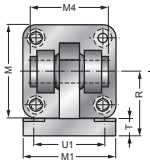
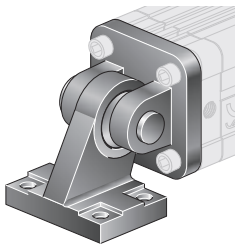
STEEL / ACCIAIO

Ø	A2	A	B	C	ØD	EN	ER	F	G	E	L	M	N	P	Code - Codice
32	73	32,5	10,5	22	10	14	15	30	10	6,6	45	10,5	5,5	5	XCM-SN-AC/32
40	77	38	12	25	12	16	18	35	10	6,6	55	11	5,5	5	XCM-SN-AC/40
50	80	46,5	15	27	16	21	20	40	10	9	65	15	6,5	5	XCM-SN-AC/50
63	89	56,5	15	32	16	21	23	45	12	9	75	15	6,5	5	XCM-SN-AC/63
80	100	72	18	36	20	25	27	45	14	11	95	18	10	5	XCM-SN-AC/80
100	118	89	18	41	20	25	30	55	16	11	115	18	10	5	XCM-SN-AC/100

### XAS-SN/ ..

REAR HINGE MOUNTING WITH NARROW ROD EYE  
MONTAGGIO A CONTROCERNIERA SNODATA STRETTA

\* = Stroke / Corsa

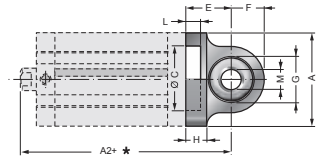
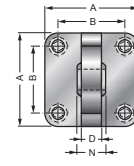
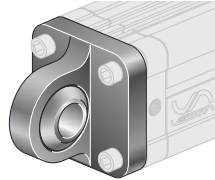


Ø	A2	M	M1	M4	ØP	P1	ØQ	ØQ1	R	S	T	T1	U1	U2	W2	Code - Codice
32	73	45	51	41	20	3	6,6	11	32	31	10	8,5	38	18	21	XAS-SN/32
40	77	52	54	48	20	3	6,6	11	36	35	10	8,5	41	22	24	XAS-SN/40
50	80	65	65	54	20	3	9	15	45	45	12	10,5	50	30	33	XAS-SN/50
63	89	75	67	60	20	3	9	15	50	50	12	10,5	52	35	37	XAS-SN/63
80	100	95	86	75	20	3	11	18	63	60	14	11,5	66	40	47	XAS-SN/80
100	118	115	96	85	20	3	11	18	71	70	15	12,5	76	50	55	XAS-SN/100

### XCM-SN-AL/ ..

CLEVIS (MALE) WITH ROD EYE  
CERNIERA MASCHIO CON SNODO

\* = Stroke / Corsa



ALUMINIUM ALLOY / LEGA DI ALLUMINIO

Ø	A2	A	B	C	D	E	F	H	L	ØM	N	Code - Codice
32	73	45	32,5	30	10,5	22	16	9	5	10	14	XCM-SN-AL/32
40	77	52	38	35	12	25	19	9	5	12	16	XCM-SN-AL/40
50	80	65	46,5	40	15	27	21	11	5	16	21	XCM-SN-AL/50
63	89	75	56,5	45	15	32	24	11	5	16	21	XCM-SN-AL/63
80	100	95	72	45	18	36	28,5	14	5	20	25	XCM-SN-AL/80
100	118	115	89	55	18	41	30	14	5	20	25	XCM-SN-AL/100

PISTON-ROD FIXING ACCESSORIES FOR ISO 21287 CYLINDERS ..... SEE PAGE A-26

ACCESSORI DI FISSAGGIO ALLO STELO PER CILINDRI ISO 21287 ..... VEDI PAGINA A-26

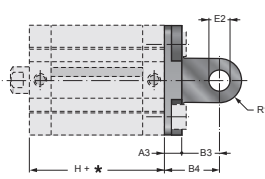
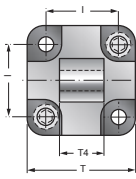
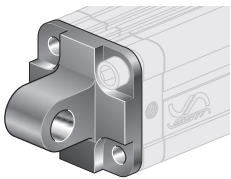
## FIXING ACCESSORIES FOR UNITOP CYLINDERS / ACCESSORI DI FISSAGGIO PER CILINDRI UNITOP

Note: the fixing screws are not included in the supply of the fittings / le viti di fissaggio non sono comprese nella fornitura degli accessori.

### SKCM/ ..

MALE CLEVIS MOUNTING  
MONTAGGIO A CERNIERA MASCHIO

\* = Stroke / Corsa



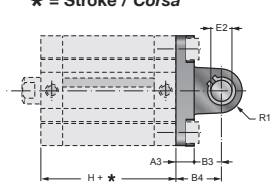
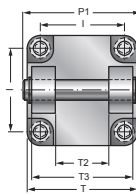
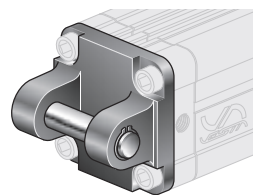
H = See previous pages  
Vedi pagine precedenti

Ø	A3	B3	B4	E2	H	I	R1	T	T4	Code - Codice
16	6	10	16	6	38	18	6	27	12	SKCM/16
20	6	14	20	8	38	22	8	34	16	SKCM/20
25	6	14	20	8	39,5	26	8	38	16	SKCM/25

### SKCF/ ..

FEMALE CLEVIS MOUNTING  
MONTAGGIO A CERNIERA FEMMINA

\* = Stroke / Corsa



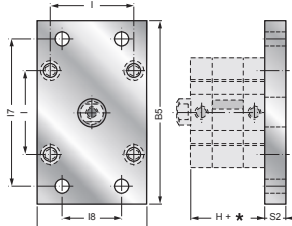
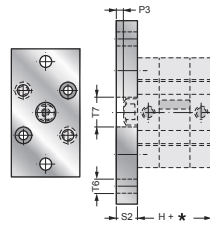
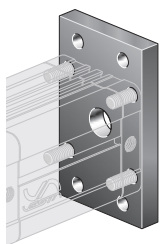
H = See previous pages  
Vedi pagine precedenti

Ø	A3	B3	B4	E2	H	I	P1	R1	T	T2	T3	Code - Codice
32	9	13	22	10	44,5	32	53	10	48	26	45	SKCF/32
40	9	16	25	12	45,5	42	60	12,5	58	28	52	SKCF/40
50	11	16	27	12	45,5	50	68	12,5	66	32	60	SKCF/50
63	11	21	32	16	50	62	78	15	83	40	70	SKCF/63
80	13	23	36	16	56	82	98	15	102	50	90	SKCF/80
100	15	26	41	20	66,5	103	118	20	123	60	110	SKCF/100

### SKFL/ ..

FLANGE MOUNTING  
MONTAGGIO A FLANGIA

\* = Stroke / Corsa



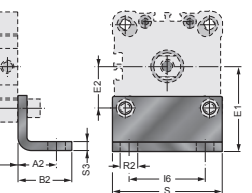
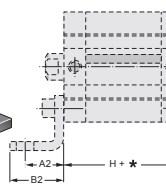
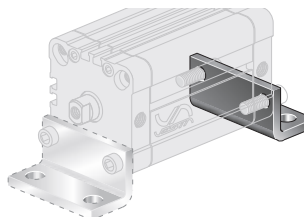
H = See previous pages  
Vedi pagine precedenti

Ø	A3	B5	H	I	I7	I8	P3	S2	T6	T7	Code - Codice
16	29	55	38	18	43	-	5,5	10	5,5	10	SKFL/16
20	36	70	38	22	55	-	5,5	10	6,5	12	SKFL/20
25	40	76	39,5	26	60	-	4,5	10	6,5	12	SKFL/25
32	50	80	44,5	32	65	32	4	10	7	14	SKFL/32
40	60	102	45,5	42	82	36	3,5	10	9	14	SKFL/40
50	68	110	45,5	50	90	45	4,5	12	9	18	SKFL/50
63	87	130	50	62	110	50	7,5	15	9	18	SKFL/63
80	107	160	56	82	135	63	7	15	12	23	SKFL/80
100	128	190	66,5	103	163	75	5	15	14	28	SKFL/100

### SKP/ ..

FOOT MOUNTING  
MONTAGGIO A PIEDINI

\* = Stroke / Corsa



H = See previous pages  
Vedi pagine precedenti

Ø	A2	B2	E1	E2	H	I6	R2	S	S3	Code - Codice
16	13	17,5	22	9	38	18	5,5	30	3	SKP/16
20	16	22	27	11	38	22	6,5	36	4	SKP/20
25	16	22	30	13	39,5	26	6,5	40	4	SKP/25
32	18	26	32	16	44,5	32	6,5	50	5	SKP/32
40	20	28	42,5	21	45,5	42	9	60	5	SKP/40
50	24	32	47	25	45,5	50	9	68	6	SKP/50
63	27	39	59,5	31	50	62	11	84	6	SKP/63
80	30	42	65,5	41	56	82	11	102	8	SKP/80
100	33	45	78	51,5	66,5	103	13,5	123	8	SKP/100