

II 2G Ex db IIC T5 Gb  
 II 2G Ex db eb IIC T5 Gb ( )  
 II 2D Ex tb IIIC T100°C Db

REMATIC, DMS3,  
 24 V DC (2P )  
 (3P )  
 PROFIBUS DP V0/V1 MODBUS RTU.  
 : LED ( , RS-232).  
 a a  
 « - ».



**DMS3**

- 220 V AC
- T
- a
- 60 % 100 %
- 2 R1, R2 (18 )<sup>1)</sup>
- READY<sup>1)</sup>
- - 0/4 - 20 mA, 4 - 12 mA, 12 - 20 mA 0/2 - 10 V<sup>1)</sup>
- 24 V DC - , ,
- 24 V DC - , ,
- ESD ( )
- - 4 - 20 mA a ( )<sup>1)</sup>
- 24 V DC, 40
- ( , , .)
- LED
- RS 232
- ISO 5210
- IP 66 / IP 68
- RE3, RE4, RE5<sup>1)</sup>
- RE1, RE2, RE3, RE4, RE5, READY<sup>1)</sup>
- PROFIBUS DP V0/V1,
- MODBUS RTU,

1) Profibus Modbus

UMR 1PA-Ex

146	x	-	x	x	x	x	x	/	x	x
-----	---	---	---	---	---	---	---	---	---	---

/		o	e	10)			
3.1			-25°C ... +55°C	C3	T5	IP 66/IP 68	1
B2	+		-25°C ... +55°C	C4			2
2			-50°C ... +40°C	C3			3
2			-25°C ... +55°C	C3			6
1	-		-50°C ... +40°C	C4			7
2			-60°C ... +40°C	C3			8

		23)			
	50 Hz	230 V AC	Z514, Z523, Z515	0	
		220 V AC	Z574c, Z563	L	
	60 Hz <sup>24)</sup>	120V AC	Z514, Z523, Z515	T	
		110 V AC	Z574c, Z563	B	
50 Hz	3x400 V AC	Z532, Z536, Z537	2		
	3x380 V AC	Z574e, Z563b	N		

230 (220) V AC			3x400 (380) V AC					
31)	32)		33)	32)		33)		
	«	»		«	»		50 Hz	60 Hz
32 Nm	20 Nm	13 Nm	64 Nm	38 Nm	26 Nm	10 min <sup>-1</sup>	12 min <sup>-1</sup>	A
-	-	-	32 Nm	20 Nm	13 Nm	20 min <sup>-1</sup>	24 min <sup>-1</sup>	B
16 Nm	10 Nm	7 Nm	16 Nm	10 Nm	7 Nm	10 min <sup>-1</sup>	12 min <sup>-1</sup>	H
						20 min <sup>-1</sup>	24 min <sup>-1</sup>	J
						40 min <sup>-1</sup>	48 min <sup>-1</sup>	C
8 Nm	5 Nm	3 Nm	8 Nm	5 Nm	3 Nm	10 min <sup>-1</sup>	12 min <sup>-1</sup>	M
						20 min <sup>-1</sup>	24 min <sup>-1</sup>	N
						40 min <sup>-1</sup>	48 min <sup>-1</sup>	P
						80 min <sup>-1</sup>	96 min <sup>-1</sup>	D

20	2 - 160	A
----	---------	---

		24 V DC					
DMS3	2P			-	Z515, Z537	F	
	3P/2P	0/4 - 20 mA	24 V DC	4 - 20 mA	Z514, Z532	G	
		0/2 - 10 V			Z523, Z536	H	
DMS3 M1	/ 2P	MODBUS RTU			Z574c, Z574e	M	
DMS3 M2					Z563, Z563b	N	
DMS3 P1			PROFIBUS DP V0 / V1			Z574c, Z574e	P
DMS3 P2						Z563, Z563b	R

UMR 1PA-Ex

146. x - x x x x x / x x

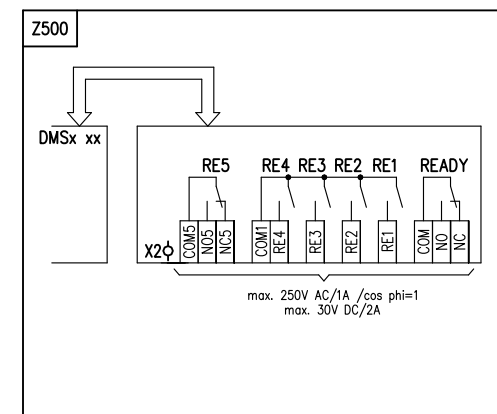
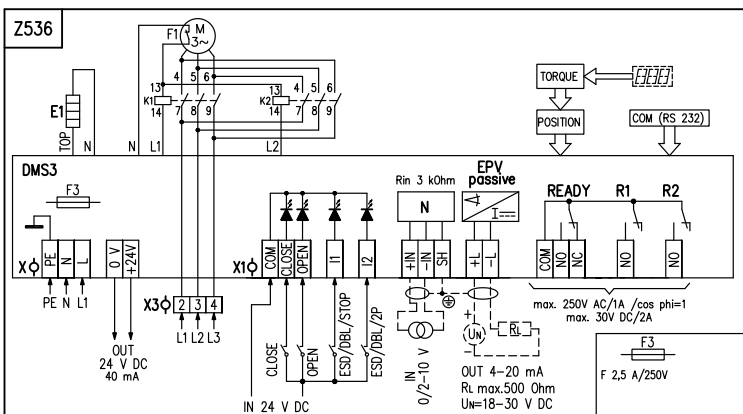
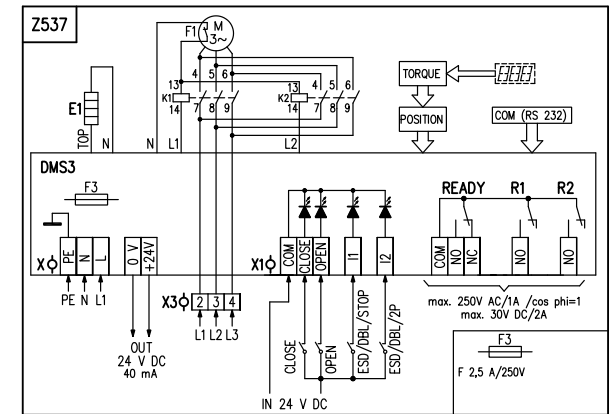
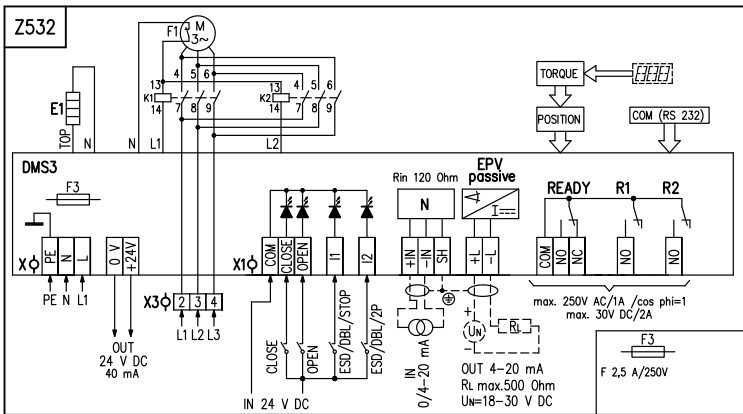
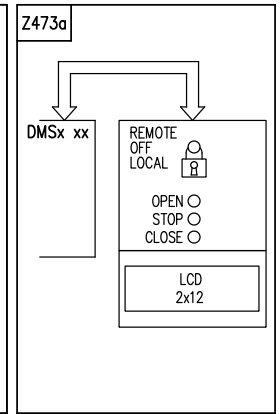
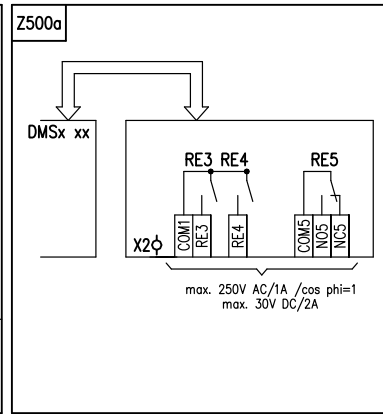
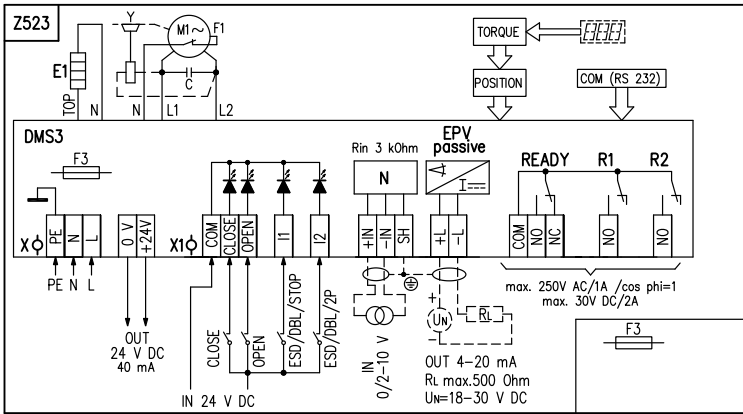
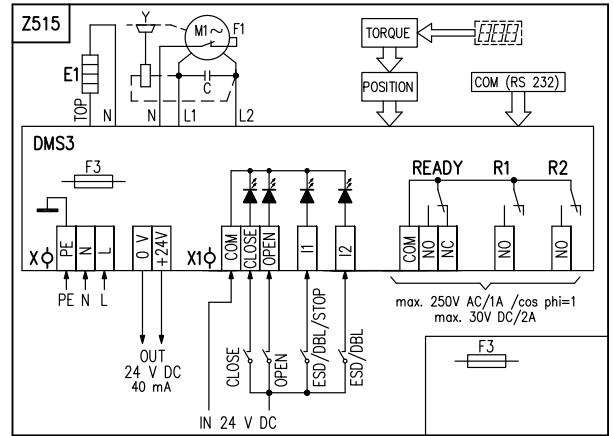
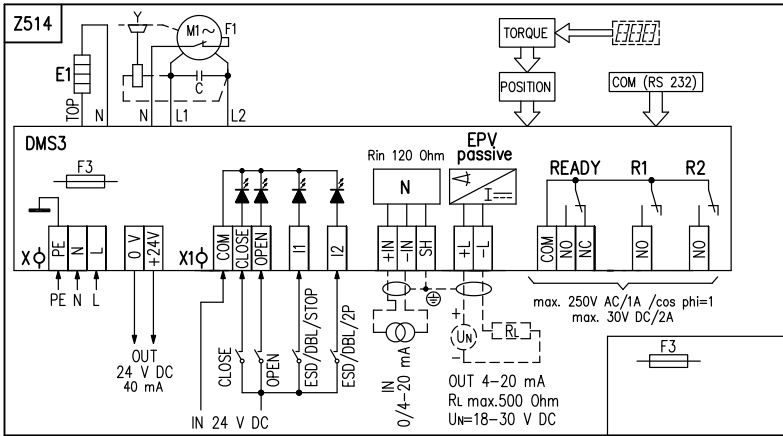
		/						
ISO 5210	F07	N	B3	Ø16	P-2082 <sup>65)</sup>	P-1497	A	
		Y/55	B4	Ø25			B	
			B1	Ø28			Z	
	F10	N	B3	Ø20		P-1497	C	
	F10	Y/70	C	14/Ø28/Ø42		P-1498	M	
	F07 <sup>61)</sup>	Y/55	A	Max. TR26 <sup>63)</sup>		P-1500	D	
F10	N							
G0	Y/60 <sup>62)</sup>							
	G0	Y/60 <sup>62)</sup>	E	Ø20		P-1498	K	
			C	14/Ø28/Ø42			L	
	F07	N	-	Ø20		P-1497	N	
			-	Ø30			P	
	F10		-	Ø20	P-1498	Q		
			-	Ø30		R		
55510	64x30/4xM6	-	11x11	P-1499	S			
		-	35°/37°; Ø32/Ø25	P-1499 <sup>67)</sup>	T			
	Ø104/4xØ15	-	19x19		U			
		-	35°/37° Ø46/Ø28	<sup>68)</sup>	V			
				<sup>69)</sup>	W			

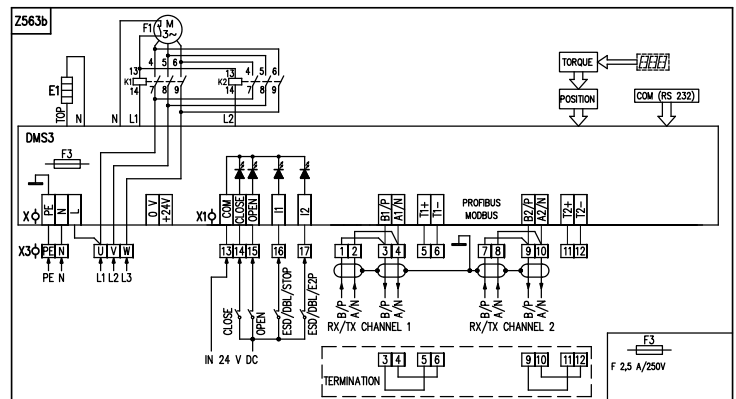
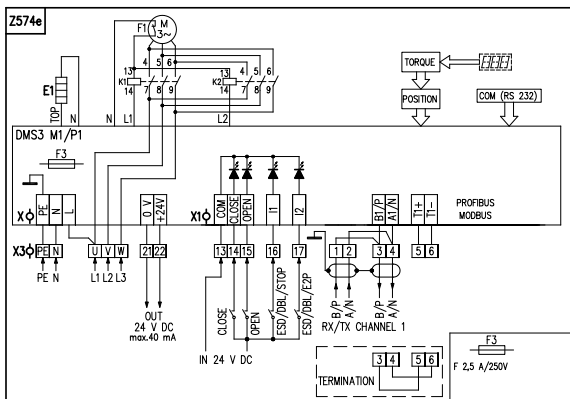
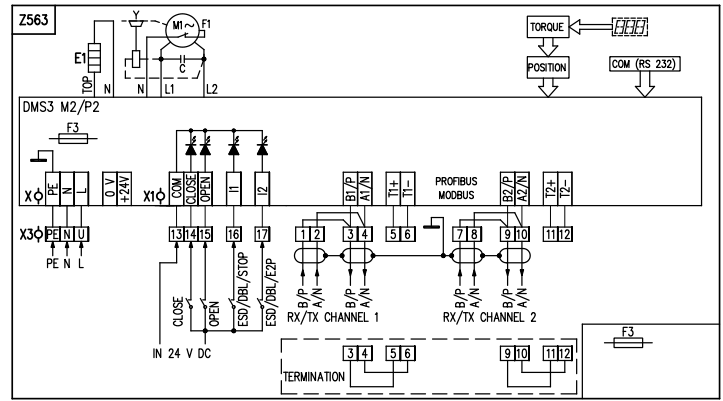
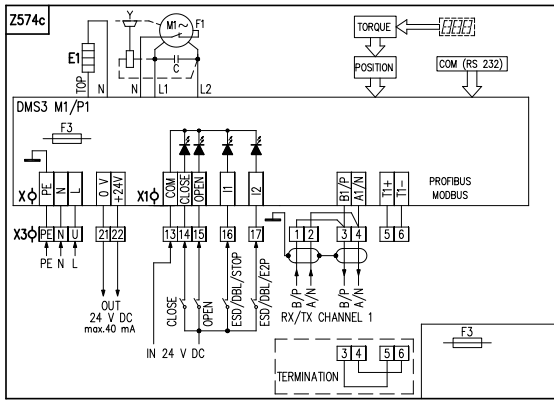
/					
	na 20				
A				0	1
B				0	3
D	RE3, RE4, RE5 ( DMS3 RE3) <sup>71)</sup>	Z500a		0	5
E	RE1, RE2, RE3, RE4, RE5, READY ( DMS3 RE6) <sup>71)</sup>	Z500		0	6
F	LCD ( -40°C)	Z473a		0	7
K	„e“ P-2082. <sup>72)</sup>	-		1	1
: A+B=20, A+D=22, A+E=23, A+F=24, B+D=29, B+E=30, B+F=31, D+F=40 ,E+F=44, A+B+D=52, A+B+E=53, A+B+F=54, A+D+F=63, A+E+F=67, B+D+F=80, B+E+F=84, A+B+E+F=113, A+B+D+F=114					

DB-9F/RJ45	DMS3	224 A80 100
------------	------	-------------

- 10) : ISO 9223/EN ISO 12944-2.
- 11) IP 68 - 10 /96
- 24) 60 , 60 100 %.
- 31) 80 %.
- 32) S2-10 min a S4-25% 90 / .
- 33) S4-25% ,90- 1200 / .
- 61) F07-A .40 .
- 62) Ø 60
- 63) Ø 26.
- 65) "de" Profibus Modbus.
- 67) 50 .
- 68) 100 .
- 69) 150 .
- 71) PROFIBUS MODBUS RTU.
- 72) „d“ „e“ „de“ ( Exd

UMR 1PA-Ex





: 32

2.5 d.

3

2

IECEX/ATEX

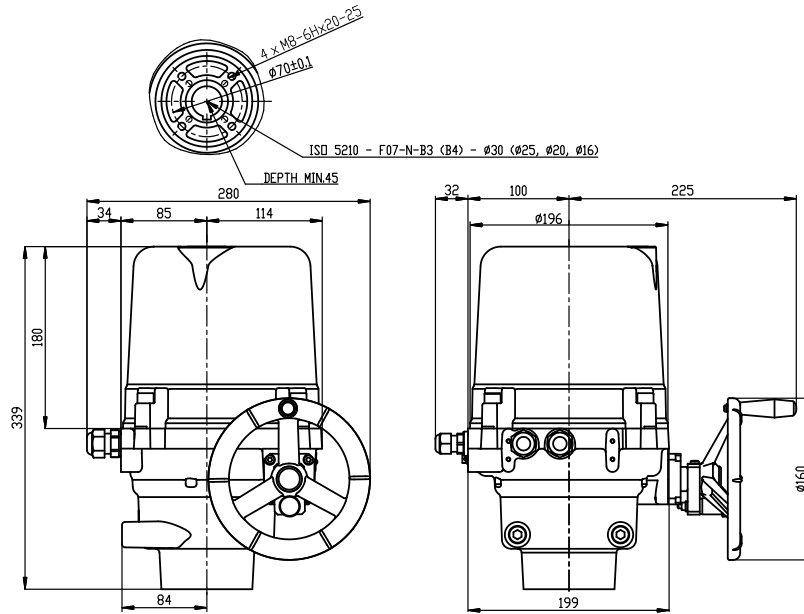
<b>X -</b>				
PE, U, V, W	(0,05 - 2,5 mm <sup>2</sup> )	(3x400/3x380 V AC, 50 Hz		
0 V, +24 V	.....2	(0,05 - 1 mm <sup>2</sup> )	24 V DC (100 mA)	
<b>X1 -</b>				
COM, CLOSE OPEN, I1, I2 ...	(0,05 - 1 mm <sup>2</sup> )		24 V DC	
+IN, -IN, SH.....	(0,05 - 1 mm <sup>2</sup> )		0/4-20 mA	
+L, -L .....	(0,05 - 1 mm <sup>2</sup> )		( ) 4-20 mA	
COM, NO, NC .....	(0,05 - 1,5 mm <sup>2</sup> )	READY (	)	
R1, R2.....	(0,05 - 1,5 mm <sup>2</sup> )	R1, R2 (	)	
COM, NO, NC .....	(0,05 - 1,5 mm <sup>2</sup> )	READY (	)	
<b>X2 -</b>				
COM1, RE1, RE2, RE3, RE4 ...	(0,05 - 1,5 mm <sup>2</sup> )	RE1 RE4 (	)	
COM5, NO, NC.....	(0,05 - 1,5 mm <sup>2</sup> )	RE5 (	)	
<b>X3 -</b>				
L1, L2, L3 .....	svorky (0,05 - 1,5 mm <sup>2</sup> )	napájacieho napätia 3x400 V AC, 50 Hz		
READY		READY		R1 R2
R 1 R 2				

Z473a ...				
Z500 .....		6-		
Z500a ...		3-		
Z514 .....			a	0/4 - 20 mA c
Z515 .....			a	
Z523 .....			a	0/2 - 10 V c
Z532 .....	4 - 20 mA	a		0/4 - 20 mA c
Z536 .....			a	0/2 - 10 V c
Z537 .....	4 - 20 mA	a		
Z563 .....			e	MODBUS / PROFIBUS -
Z563b ...				e MODBUS / PROFIBUS -
Z574c ...			e	MODBUS / PROFIBUS -
Z574e ...				e MODBUS / PROFIBUS -



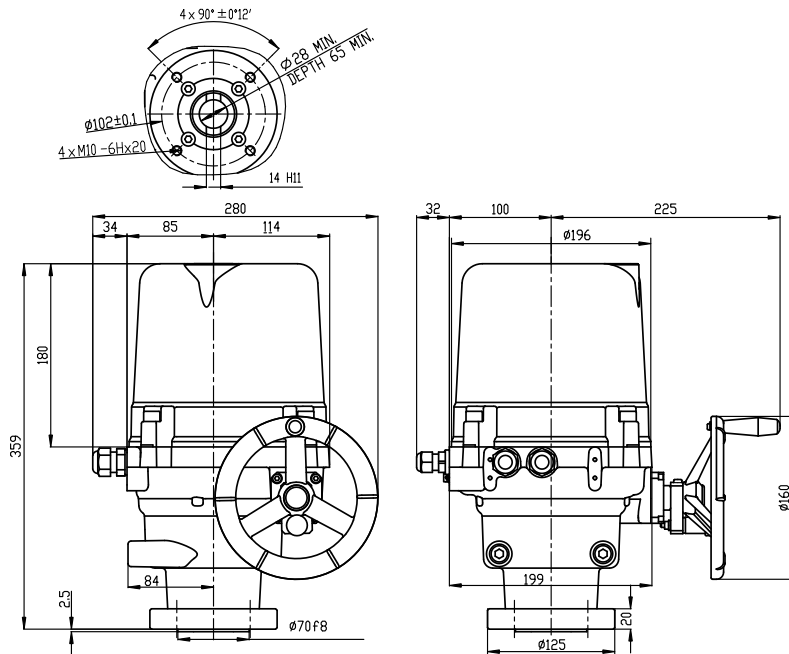
UMR 1PA-Ex

ISO 5210, B3 / B4



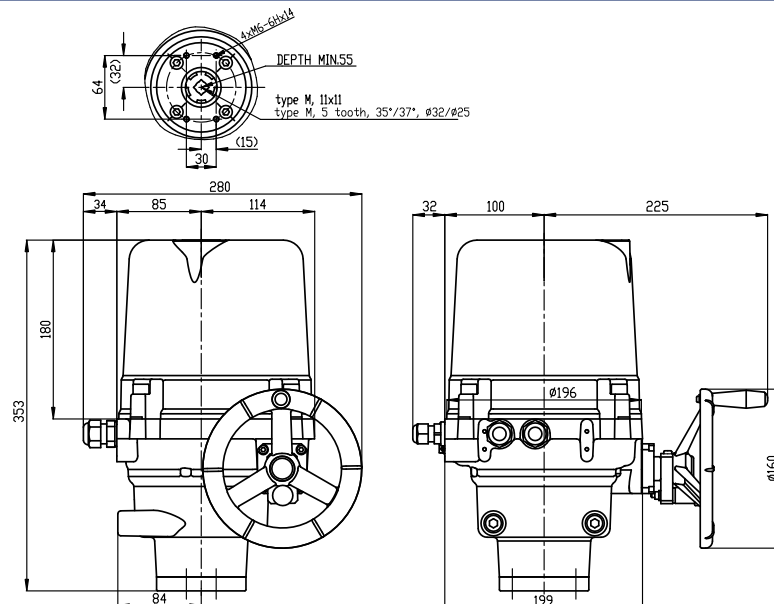
P-1497

DIN 3338, C



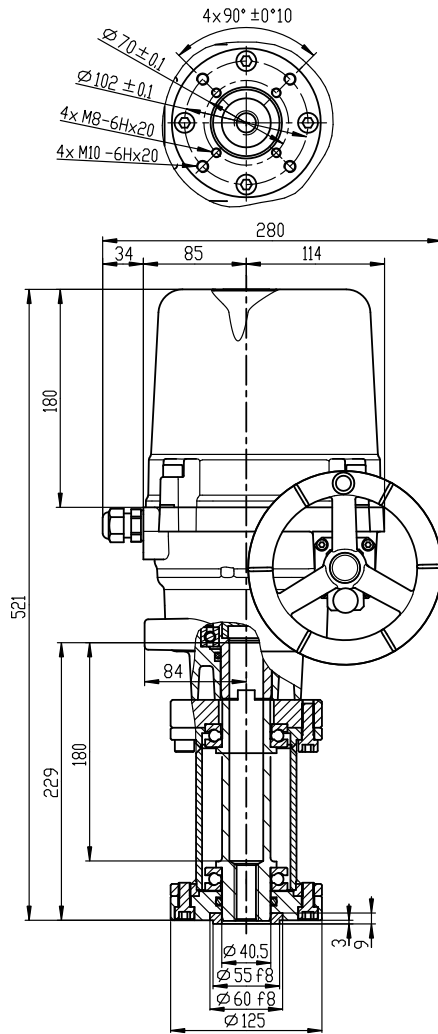
P-1498

55510 -



P-1499

ISO 5210, A

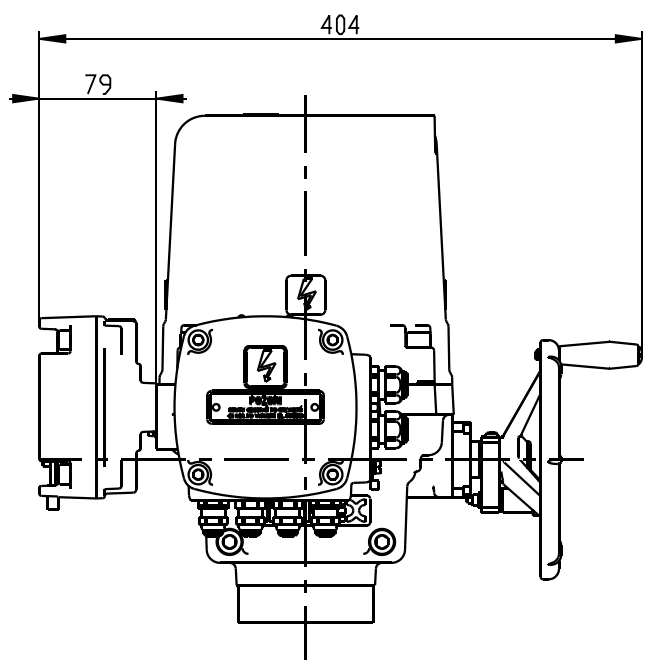
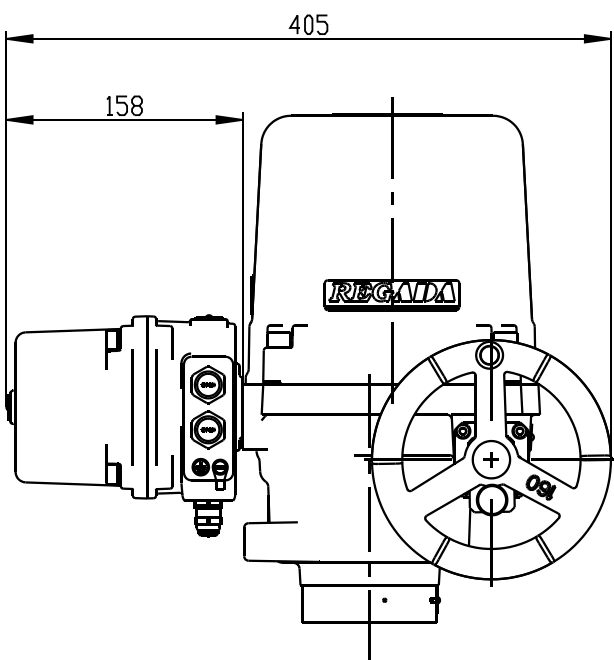


P-1500

Profibus Modbus

U R 1PA-Ex

„de“



P-2082